



**AEROSPATIALE**

GENERAL AVIATION



**You're not just buying an airplane.  
You're buying the company behind it.**

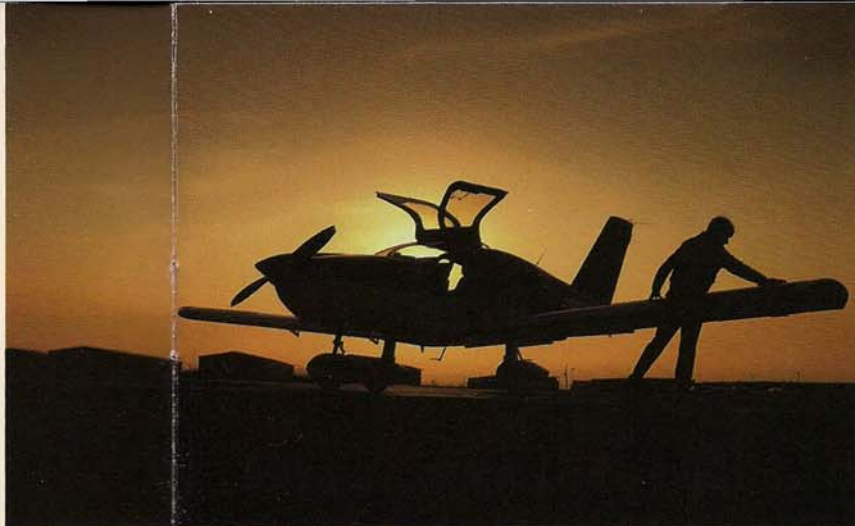
## THE CARIBBEAN SERIES. FROM AEROSPATIALE.

It's amazing what can be accomplished when you start with a clean slate. And that's exactly what our engineers did when they designed our new Caribbean Series of single-engine aircraft.

In the air, on the ground, in the cockpit or from the ramp, it's apparent these aircraft are the product of innovation and new technology — not just the application of new paint and interior to a decades-old design. The Caribbean Series brings you state-of-the-art aircraft designed to optimize comfort and performance — wherever you fly.

Just open our exclusive gull-wing doors to a spacious, 50-inch-wide cabin and the most sophisticated cockpit design ever seen in a single-engine aircraft. Feel the smooth, stable ride produced by our computer-designed, single-spar main wing. Or take a look at the quick and easy accessibility to the engine compartment and instrument panel. Inside and out, our aircraft have been built to reflect the absolute latest in aircraft design technology.

But even though our Caribbean Series is new, Aerospatiale is no newcomer to aviation. Actually, we've been in the airplane business since 1911, manufacturing



aircraft for both civil and military use, including the revolutionary Concorde and Airbus A300 Series airliners, as well as the new turbine-powered TBM 700. Now, we've taken all this experience and combined it to bring you the first new production series of single-engine aircraft to come along in the last two decades.

To date we've manufactured over 1,200 single-engine aircraft at our ultra-modern production facility in Tarbes, France. Yet today, more than 80 percent of the major components used in our aircraft originate in the U.S. — including Lycoming engines, Bendix/King avionics, Cleveland wheels and brakes, and Hartzell propellers. We believe that selecting only the finest, most proven components gives you an aircraft that's not only sophisticated, but also reliable and supportable — worldwide. What's more, Aerospatiale Dealers and Service Centers are conveniently located around the world, so you can always be sure of receiving exceptional product support — no matter where you fly.

The Caribbean Series: TAMPICO CLUB, TOBAGO, TOBAGO XL, TRINIDAD and TRINIDAD TC. If you want a sophisticated, stylish, single-engine aircraft that's been designed with your needs in mind, the choice is Aerospatiale.



## TAMPICO CLUB

It may not surprise you to hear pilots who have flown the Tampico Club describe it with words like "predictable" and "controllable." But when was the last time you heard the words "sleek," "impressive" and "comfortable" associated with a training aircraft?

At Aerospatiale, we think it's about time. And with the Tampico Club, we've combined performance, style, stability and comfort in what's certain to become known as the ultimate training aircraft.

Choose the Tampico Club and you get not only an excellent primary and instrument trainer, but also a great all-around aircraft that's fun to fly. After all, it's not only students and instructors who appreciate an aircraft with a cockpit that's comfortable and roomy. Or an aircraft that's as stable in the pattern as it is on an instrument approach. Or an engine that's recognized as much for its reliability and low maintenance costs as it is for its outstanding performance.

Combine the Tampico's dependable, cost-effective design with its sleek lines, and you've got an airplane that's bound to add more appeal to your training program and more enjoyment to your pleasure flying.

*Our large, forward-mounted, vertical stabilizer allows landings in up to a 25 knot crosswind. An Aerospatiale exclusive.*



### SPECIFICATIONS

### TAMPICO CLUB

Engine:	Lycoming O-320
Power:	160 hp
Usable fuel:	40 gal (152 l)
Max. takeoff wt:	2337 lbs (1060 kg)
Useful load:	926 lbs (420 kg)
Baggage hold:	143 lbs (65 kg)
Maximum speed:	110 kts
Cruising speed:	106 kts
Service ceiling:	11,000 ft (3353 m)
Range (75% power w/res):	455 nm (843 km)
Range (65% power w/res):	505 nm (935 km)
Takeoff distance (50 ft obstacle):	1706 ft (520 m)
Rate of climb (Sea level):	738 fpm
Landing distance (50 ft obstacle):	1378 ft (420 m)
Demonstrated x-wind:	25 kts

NOTE: All performance figures calculated at max. gross weight. Specifications are subject to change without notice.



## TOBAGO/TOBAGO XL

Whether you take to the sky for business or pleasure, the functional, fixed-gear Tobago makes for plenty of fun en route. Teamed with a constant speed propeller and 180 hp engine, the original Tobago lets you cruise at an impressive 126 nautical miles per hour while burning less than 11 gallons of fuel. Or the new fuel-injected Tobago XL, with a 940 fpm rate of climb and 200 hp that allows for more efficient high altitude or short field takeoffs. Either way, both the Tobago and the Tobago XL offer combinations of speed, simplicity and efficiency that makes them ideal for cross country travel or just a leisurely flight in the afternoon.

What's more, the Tobago family's logical array of controls, instruments and avionics will undoubtedly help you be more organized in the cockpit. You'll find everything where it should be. And our big wide-open cabin even makes cumbersome chores, like unfolding charts, a cinch.

Your passengers will also find room to admire our spacious interior, which extends its full width all the way back to ensure their comfort. And if by chance your travel plans include the family, the Tobago even has room to carry up to three children comfortably in the back seat.

If you're looking for simplicity, comfort and performance, but don't want to sacrifice style, the Tobago is the perfect aircraft for you.

*A smooth transition from spinner to cowl and sleek, streamlined wheel fairings epitomize Aerospatiale's attention to detail in overall design.*



SPECIFICATIONS	TOBAGO	TOBAGO XL
Engine:	Lycoming O-360 AI AD	Lycoming IO 360 A1 B6 (fuel injected)
Power:	180 hp	200 hp
Usable fuel:	54 gal (204 l)	54 gal (204 l)
Max. takeoff wt:	2535 lbs (1150 kg)	2535 lbs (1150 kg)
Useful load:	1003 lbs (455 kg)	959 lbs (435 kg)
Baggage hold:	143 lbs (65 kg)	143 lbs (65 kg)
Maximum speed:	128 kts	140 kts
Cruising speed at 75% power:	124 kts	130 kts
Service ceiling:	13,000 ft	13,000 ft
Max. operating range (75% power w/res):	565 nm (1050 km)	594 nm (1100 km)
(65% power w/res):	580 nm (1080 km)	648 nm (1200 km)
Takeoff distance (50 ft obstacle):	1657 ft (505 m)	1558 ft (475 m)
Rate of climb (Sea level):	787 fpm	940 fpm
Landing distance (50 ft obstacle):	1509 ft (460 m)	1475 ft (450 m)
Demonstrated x-wind:	25 kts	25 kts

NOTE: All performance figures calculated at max. gross weight. Specifications are subject to change without notice.



## TRINIDAD/TRINIDAD TC

With Trinidad and Trinidad TC, seeing is believing. But the flying is, quite frankly, extraordinary. From sophisticated styling to superior performance to contemporary panel design, the Trinidad radiates luxury, capability and state-of-the-art construction.

Trinidad's rich, tastefully styled interiors provide a level of elegance unsurpassed by any aircraft in the category. Featuring our custom-designed, ergonomic seating with air-cushioned lumbar support, the Trinidad provides exceptional comfort for pilots and passengers alike — whether you're flying across the country or just across town.

And if your mission calls for high altitudes, the turbo-charged Trinidad TC delivers the performance you need, plus all the other great Trinidad features and benefits you'd expect.

Just like all the Caribbean Series aircraft, Trinidad and Trinidad TC bring you everything that's new in single-engine aircraft design: Style, comfort, outstanding performance and excellent serviceability. Inside the cockpit, the Trinidad's controls, instruments and gauges are logically placed. Power controls fall readily to hand on the center console. Circuit breakers are all within easy reach. And our avionics panels are designed to accommodate enough radios to please even the most fervent electronics devotee.

*With our trailing-link landing gear your landings will be smoother — even on rough runway surfaces.*



If you want to experience what's really new in luxury-class singles, take a test flight in a Trinidad — the undisputed champion in its class for useful load, cabin size and world-class style.

### SPECIFICATIONS

#### TRINIDAD

Engine:	Lycoming IO-540
Power:	250 hp
Usable fuel:	86 gal (326 l)
Max. takeoff wt:	3086 lbs (1400 kg)
Useful load:	1323 lbs (600 kg)
Baggage hold:	143 lbs (65 kg)
Maximum speed:	167 kts
Cruising speed:	164 kts
Service ceiling:	20,000 ft (6096 m)
Range (75% power w/res):	885 nm (1640 km)
Range (65% power w/res):	966 nm (1790 km)
Takeoff distance (50 ft obstacle):	2099 ft (640 m)
Rate of climb (Sea level):	1200 fpm
Landing distance (50 ft obstacle):	1772 ft (540 m)
Demonstrated x-wind:	25 kts

NOTE: All performance figures calculated at max. gross weight. Specifications are subject to change without notice.



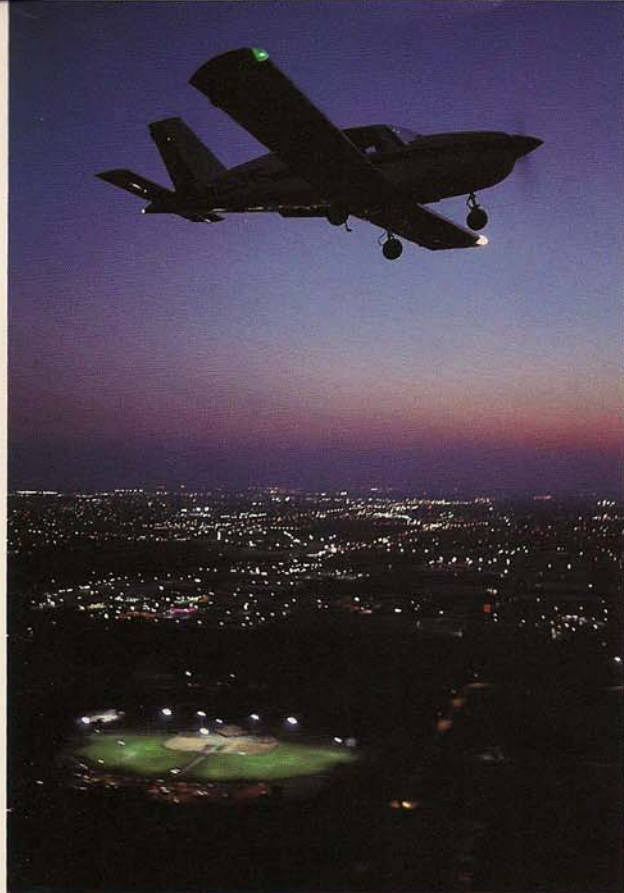
## SPECIFICATIONS

### TRINIDAD TC

Engine:	Lycoming T10-540
Power:	250 hp
Usable fuel:	86 gal (326 l)
Max. takeoff wt:	3086 lbs (1400 kg)
Useful load:	1236 lbs (561 kg)
Baggage hold:	143 lbs (65 kg)
Maximum speed:	200 kts
Cruising speed:	187 kts
Service ceiling:	25,000 ft (7620 m)
Range (75% power w/res):	810 nm (1500 km)
Range (65% power w/res):	962 nm (1780 km)
Takeoff distance (50 ft obstacle):	1953 ft (595 m)
Rate of climb (Sea level):	1126 fpm
Landing distance (50 ft obstacle):	1750 ft (533 m)
Demonstrated x-wind:	25 kts

NOTE: All performance figures calculated at max. gross weight. Specifications are subject to change without notice.

Trinidad's large baggage compartment can hold up to 143 lbs. of luggage.



Whether you're in the market for training aircraft, personal transportation, or corporate travel, there's a new Aerospatiale single that's ideally suited to your needs. And no matter which model you choose, you won't ever need to compromise on performance, styling or value.

If you'd like the name and location of the Aerospatiale Dealer nearest you or for additional information on any of the aircraft in our product line, just give us a call. In the United States call 1-800-999-1110. Outside North America, contact our offices in France at 33-1-45-06-37-60.

And remember, you're not just buying an airplane. You're buying the company behind it.



**AEROSPATIALE**

GENERAL AVIATION

2701 Forum Drive, Grand Prairie, TX 75051  
1-800-999-1110